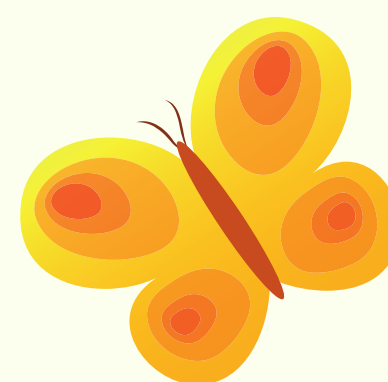
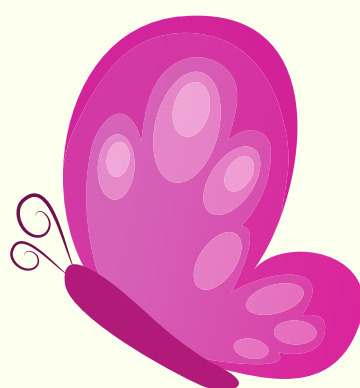
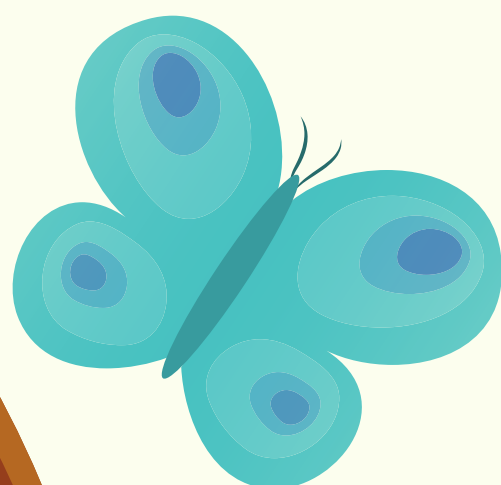


EASTER EGG RAFFLE

We are asking all children to start bringing in donations for the easter raffle. This can include Easter Eggs, Easter Craft, Baskets, Wrapping Materials. These can be handed into the classroom teacher no later than Wednesday 1st April

Raffle will be drawn Monday 6th April at Morning Assembly

We are also looking for Parent Helpers to assist with wrapping the prizes on Thursday 2nd April, in the school hall foyer straight after school drop off. If you can come and assist please send an email to the P&F or give Carina a call



PRESIDENT: SOPHIE PAVLIS VICE PRESIDENT: RACHELLE MOORE

TREASURER: FIONA WILSON

SECRETARY: CARINA BEATTIE - 0402909157

EMAIL: STMICHAELSPNF@GMAIL.COM

