

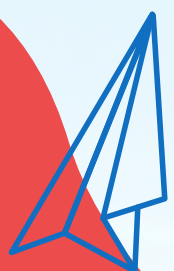
ASPIRE OSHC



VACATION CARE PROGRAM **ASPIRE NOWRA**

SEPTEMBER / OCTOBER 2025

BOOK NOW



VACATION CARE PROGRAM

ASPIRE Nowra

SERVICE MANAGER: Jo Hart
PHONE: 0448141753
EMAIL: nowraps@aspire-oshc.com.au

Monday
29/9/2025

No Limits Sports Internal Excursion



Join us as Josh from No Limits Sports take us through some traditional indigenous sports games played thousand's of years ago

- Location: Aspire Nowra
- Vacancies: 40
- Activity start: 10:30am
- Activity end: 2:30pm

\$95

Tuesday
30/9/2025

Maritime Museum Excursion



Visit the Jervis Bay Maritime Museum, and explore the artifacts and treasure hunt, followed by a mangrove board walk.

- Location: Jervis Bay Maritime Museum
- Vacancies: 35
- Leaving centre: 10am
- Return to centre: 2:30pm

\$105

Wednesday
01/10/2025

Wheels Day Centre Day



Bring your helmet and your wheels for an amazing day riding around the school.

- Location: Aspire Nowra
- Vacancies: 40
- Activity start: 10:30am
- Activity end: 2:30pm

\$85

Thursday
02/10/2025

Play -O - Rama Excursion



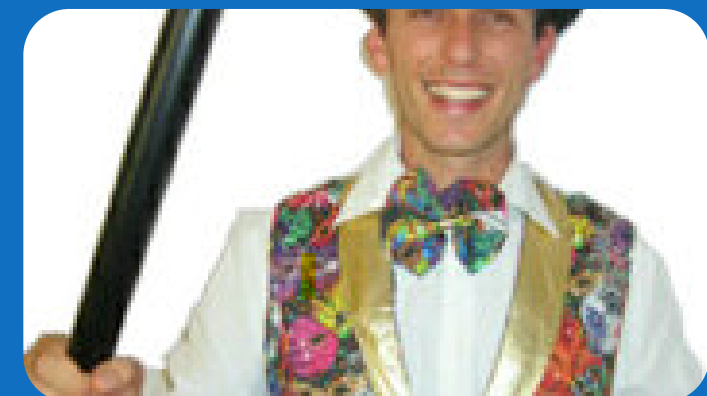
Enjoy playing on a multi-level climbing structure, ball pits, and giant slides that will see the children laughing and playing for hours.

- Location: Play o Rama
- Vacancies: 35
- Leaving centre: 10:30am
- Return to centre: 12:30PM

\$105

Friday
03/10/2025

Magic Daniel Internal Excursion



Magic Daniel has entertained thousands of children and families at hundreds of special events over the last 15 years. Daniel began in Sydney while completing a performing arts degree and now predominantly works in regional NSW.

- Location: Aspire Nowra
- Vacancies: 40
- Activity start: 10:30am
- Activity end: 12pm

\$95

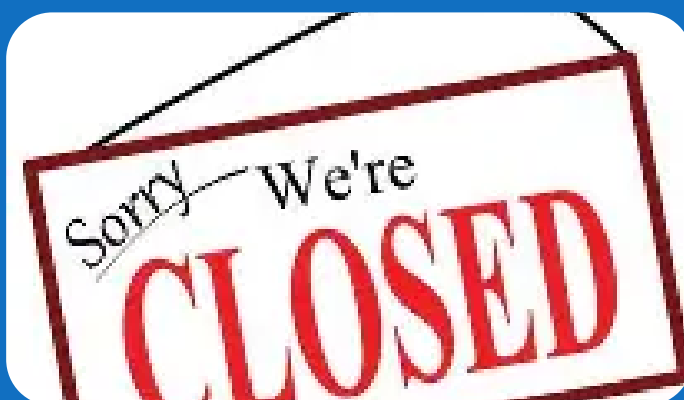
VACATION CARE PROGRAM

Nowra

SERVICE MANAGER: Jo Hart
PHONE: 0448141753
EMAIL: nowraps@aspire-oshc.com.au

Monday
 06/10/2025

Public Holiday Centre Closed



Public Holiday

- Location: Nowra
- Vacancies: N/A
- Activity start: N/A
- Activity end: N/A

\$

Tuesday
 07/10/2025

Nowra Fire Station Excursion



Join us as we visit our local fire brigade,. We learn about fire safety in the home.

- Location: Nowra Fire Station Sth Nowra
- Vacancies: 35
- Leaving centre: 10 am
- Return to centre: 12:30PM

\$105

Wednesday
 08/10/2025

The Alphabet of Awesome Science Excursion



We join professors Lexi Con and Noel Edge (the Word Nerd and the Science Freak) for a thrilling 52-minute voyage through the alphabet – where great big chewy sesquipedalian words inspire mind-blowing scientific surprises.

- Location: Shoalhaven Entertainment Centre
- Vacancies: 40
- Activity start: 12pm
- Activity end: 3pm

\$105

Thursday
 09/10/2025

Daggy Disco day Centre Day



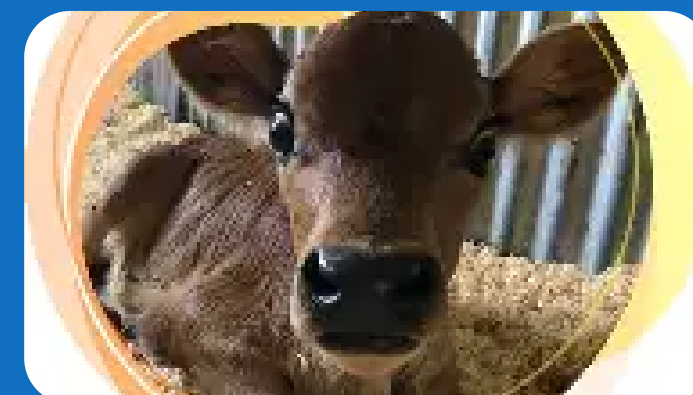
Dress up in your daggiest disco clothing and dance the day away !
 Prizes for the daggiest outfit!!

- Location: Nowra Aspire
- Vacancies: 40
- Activity Start: 10:30am
- Activity End: 2pm

\$85

Friday
 10/10/2025

Matildas Nursery Visit Internal Excursion



Matilda's nursery brings all the cute animals to see us at Aspire, it's cuddle time.

- Location: Aspire Nowra
- Vacancies: 40
- Activity start: 10:30am
- Activity end: 12:30pm

\$95



VACATION CARE PROGRAM

Nowra

SERVICE MANAGER: Jo Hart
PHONE: 0448141753
EMAIL: nowraps@aspire-oshc.com.au

Monday
13/10/2025

Sports Day
Centre Day



Join us for a sporty day
full of fun and cheers.

- Location: Nowra
- Vacancies: 40
- Activity start: 10am
- Activity end: 2pm

\$85

Tuesday
14/10/2025

Back to schoool



Back to School

\$

Wednesday
15/10/2025

Back to School



Back to School

\$

Thursday
16/10/2025

Back to School



Back to School

\$

Friday
17/10/2025

BACK TO SCHOOL



Back to School

\$



IMPORTANT DAILY INFORMATION

WHAT TO BRING EACH DAY



Hat



Morning Tea & Lunch



Water Bottle



Backpack



Enclosed Shoes



Sun Safe Clothing

WHAT WE PROVIDE EACH DAY



Breakfast



Afternoon Tea



Late Snack

DAILY STAFFING RATIOS

All ratios adhere to National Laws & Regulations. Daily ratios will be based off the activity and can range anywhere from 1:5 - 1:15.

VACATION CARE IMPORTANT FAMILY INFORMATION

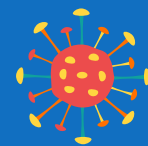


Join our fun filled ASPIRE OSHC Vacation Care program. To make a booking for Vacation Care please 'make a booking' through the [OWNA parent portal](#).



NO HAT NO PLAY

As a sun safe measure ASPIRE OSHC requires all children and staff to wear a Cancer Council approved hat during high UV periods. In addition, and as required by the Cancer Council and WHS legislation we monitor the UV Index daily to ensure we take all reasonable precautions to protect children and staff from over exposure to the sun.



ALLERGY AWARENESS

On enrolment, you are required to advise staff if your child has an allergy and identify the allergy on the enrolment form. To ensure we are able to take best care of your child we ask that you also provide information as to the triggers and symptoms of your child's allergy. All efforts will be made by staff to avoid such triggers. All ASPIRE OSHC services are "Nut Free" environments. Children are not allowed to bring nuts of any type into our services. The sharing of food is also not allowed.



ARRIVALS AND DEPARTURES

You are required to sign your children in and out of the service each day recording arrival and departure time. For safety purposes, it is important that staff are informed of your child's arrival and departure daily.



APPROPRIATE CLOTHING

As a sun safe measure ASPIRE OSHC requires all children and staff to wear a Cancer Council approved hat during high UV periods. In addition, and as required by the Cancer Council and WHS legislation we monitor the UV Index daily to ensure we take all reasonable precautions to protect children and staff from over exposure to the sun.



ANAPHYLAXIS

If your child has a diagnosed allergy, before your child can attend the service you must provide a completed coloured allergy action plan including a coloured photo and labelled medication. All medication should be handed directly to staff on arrival. All medications must be on the premises at all times when your child is present. The action plans are to be updated as required (at least yearly) and staff notified of any changes to the action plan (refer to the anaphylaxis policy and procedure).



MEDICATION

Before we can administer a prescribed medication to your child, we require you to complete a medication authority form. All sections of the medication form need to be completed. Medication can only be administered if the medication is in its original packaging and labelled with the child's name, a current date and the name of the medication and dosage required. (refer to medication policy) Children returning from an illness will require a Doctor's clearance certificate stating they are no longer infectious and are fit to attend care.



SUNSCREEN

Sunscreen is available at the service, we ask that you apply the sunscreen to your child upon arrival. Staff will supervise re-application during the day. If your child is sensitive or has an allergy to the sunscreen we use, please supply an appropriate sunscreen for your child.



ASTHMA

If your child has been diagnosed with Asthma, you must provide a current Asthma action /management plan, which needs to have been completed by your treating GP. In addition we require a long term medication form (refer to the asthma policy and procedure).



PERSONAL BELONGINGS

We recognise that some children may like to bring cherished toys and equipment from home for use during the vacation care program. ASPIRE OSHC cannot take responsibility for lost or damaged items - this includes technology! Tech use can only take place in a designated space at a designated time. These rules will be explained to the children every day before the start of the daily program.